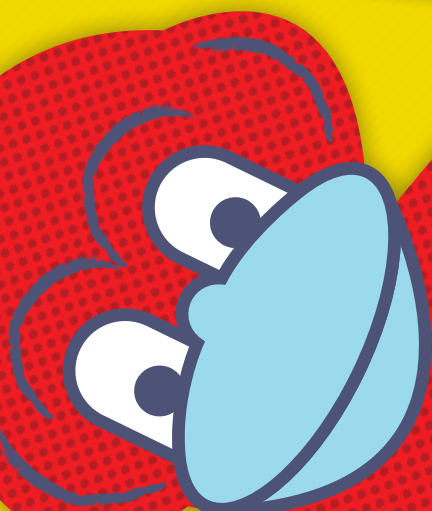


SPRING FLING 12

STREET FESTIVAL



ERROL STREET NORTH MELBOURNE

SUNDAY 21 OCTOBER, 11AM – 6PM



CONNECTING COMMUNITIES

Produced by



Supported by



Sponsored by



STREET FESTIVAL

SPRING
FLIN912

www.springfling.org.au

Don't miss this year's Spring Fling – the festival for North and West Melbourne. Local traders, schools, community and cultural groups will come together to bring you an outstanding program on Sunday 21st October. Errol St will be closed off to traffic and trams for a day full of entertainment, workshops, food, market stalls, demonstrations and giveaways.

Just when you think you've done the Spring Fling you'll be enticed by the **Sustainability Street, Very Edible Gardens and Green Renters** stalls, powerful chooks, worm farms and the best honey you've tasted from the roofs of your neighbors'. Try your hand at **Mini Golf**, and the workshops and demonstrations at **Kids Zone**. Be wowed by the international circus routines performed by **ThisSideup acrobatics, Little Red Trapeze** and make your own juggling ball with **Acrobatica**.

Fashions, Bell Tower Tours, the launch of a sensational cookbook from **North Melbourne Primary School**, the **TAC Vanessa Bus**, Performances from the **Australian Centre of Performing Arts (ACOPA)** and Club Voltiare, **Treasure Hunt** and roving street entertainment.

What a big day is install for you at the 2012 Spring Fling. Don't regret not being there. Don't be the monkey who misses out! Just Be there

To help manage traffic congestion, please avoid driving your vehicle to the Spring Fling. Instead walk, ride or take public transport.

- Errol street will be closed to traffic and trams between Queensberry Street and Victoria Street on the festival day, 21 October.
- Special mention to the good folk at Yarra Trams for putting on extra services to help get people to / from and around the Errol St road closure and festival precinct.
- If you would like to travel by tram, take route number 59, 55 or 57, Yarra Trams will provide a bus service to connect the number 57 tram.
- If you would like to travel by train North Melbourne, Flagstaff, Macaulay and Flemington Bridge Stations are all close by.
- Please check transport maps or visit www.yarratrams.com.au/ or www.metrotrains.com.au.

Link the Monkey represents the playful and fun sides of connecting with the people and places in North and West Melbourne.

Ardie the Elephant represents the importance of strength and balance. Elephants are renowned for their concern for their community and each other.

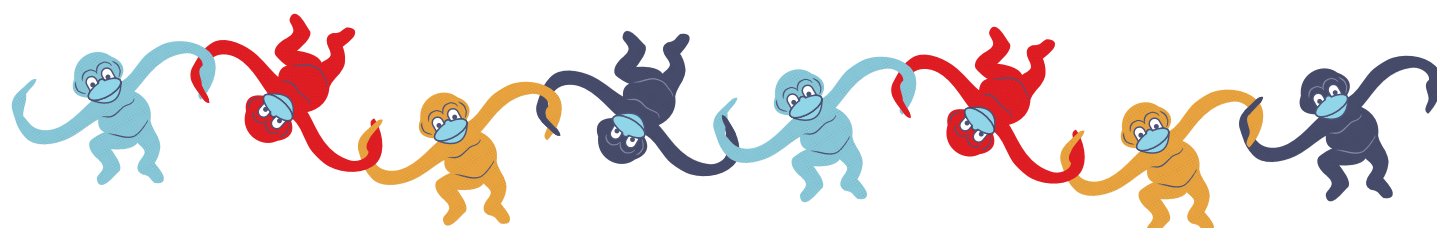
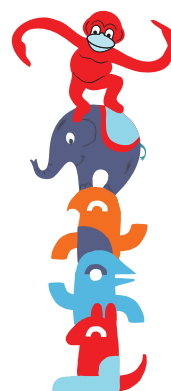
Bungil the Eagle represents the traditional Wurundjeri People of North and West Melbourne.





















Waa the Crow represents the traditional Boon Wurrung People of the North and West Melbourne.

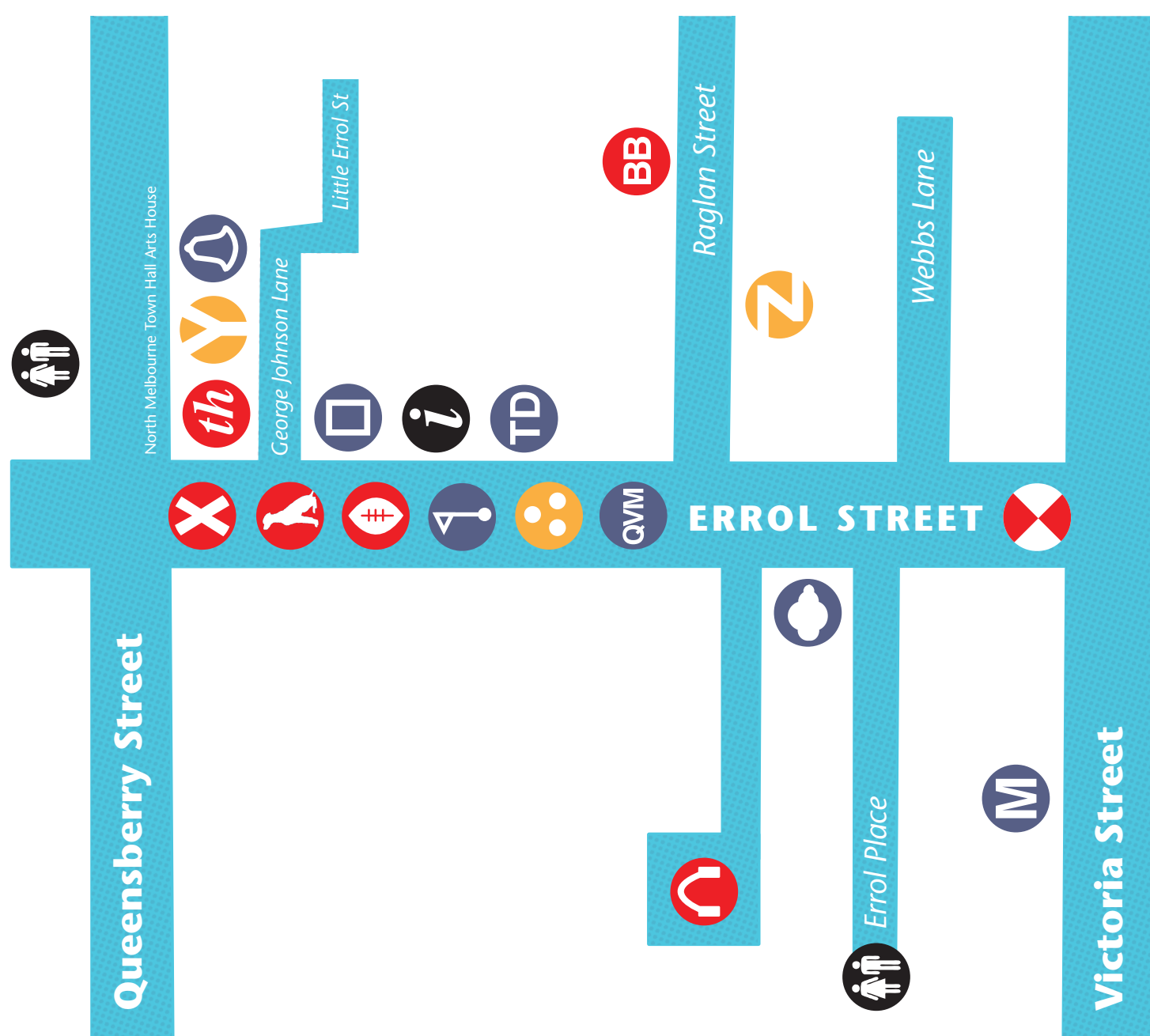
Roo the Kangaroo represents the more contemporary people of North and West Melbourne.

Thanks to the generous festival volunteers, traders and festival partners who have helped make the festival possible. Thanks to Kay Oke and her friends who started what became known as Spring Fling.

We acknowledge the people of the Kulin nation, traditional owners of the land that became North and West Melbourne, including the Boon Wurrung and Wurundjeri people, who gathered in this place for ceremonies and cultural activities long long before the 1970's barbeque that started Spring Fling



ENTERTAINMENT	
	Centre Stage
	Theatre
	NMFC
	Black Box Theatre
	Silent Disco
	Dog Show
	Victoria Stage
WORKSHOPS	
	Yoga Club
	Kids Zone Workshops
	Aerial Circus and Juggling Workshops
ACTIVITIES	
	Bell Tower Tour
	Laneway Gallery
	Mini Golf
	Queen Victoria Markets
	Sustainability Stand
	Trash and Treasure Markets
	Thread Den
	North Melbourne Markets
NEED TO KNOW	
	Toilets
	The Centre



For further details visit **www.springfling.org.au**